

SERVICE

SUPPORT

VALUE

PRODUCT PORTFOLIO



# Your Trusted Partner For More Than Four Decades

**Biotech India**

[www.BiotechIndia.com](http://www.BiotechIndia.com)

BiotechIndiaHQ



 [Info@BiotechIndia.com](mailto:Info@BiotechIndia.com)  Tel: +91-11-4984-6500 | +91-11-2610-1271

## Luminescence Assay Systems

Lites reagents are an essential tool for drug development, enabling investigations on cell viability, gene expression, transfection efficiency and enzyme activity

**Reporter Gene Assays** enable high sensitivity measurement of gene expression and cell signaling through the addition of bioluminescent genes into target cells

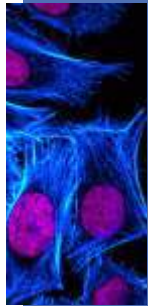
**Britelite® Plus | Steadylite™ Plus | Neolite™ | Sensilite™ | Twinlite™**

**Cytotoxicity and Cell Proliferation Assays** are commonly used in the drug discovery process to assess a compound's ability to cause or block a biologic activity without having toxic effects on cells

**ATPlite™ | ATPlite™ 1step | ATPlite™ 3D | ATPlite™ 3D 1step**

**Kinase Activity Assay** allows fast, reliable detection of any kinase activity in a one-step, homogeneous assay format

**Easylite-Kinase**



HTRF™

Using a combination of FRET technology with time-resolved measurement this is the ideal platform used for drug target studies in high-throughput screening assays.

- GPCRs
- Cytokines
- Immunity & Cancer
- Disease Biomarkers
- Cellular Phosphorylation
- Epigenetics
- Biotherapeutics
- Kinases
- Tools for PPIs

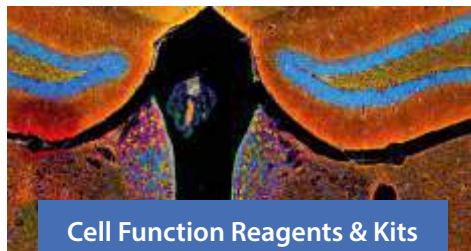


Alpha Assays

Bead-based assay technology to study biomolecular interactions for high-throughput drug screening assays, GPCR functional assays, enzymatic assays, immunoassays in multi-formats

**AlphaLISA™ | AlphaScreen®**  
**AlphaLISA SureFire® Ultra™**  
**Alpha Toolbox**

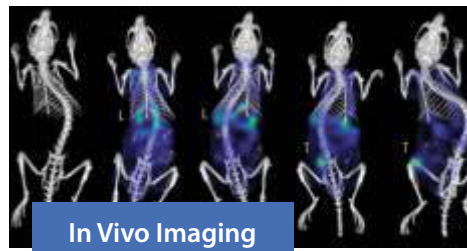
- Enzymes
- Proteins
- Receptor-ligand Interactions
- Small Molecules
- Nucleic Acids



Cell Function Reagents & Kits

Phenovue reagents offer a complete suite of cell function reagents and kits for visualizing key cellular events including viability, apoptosis, mitochondrial membrane potential, calcium, reactive oxygen species (ROS) or hypoxia indicators

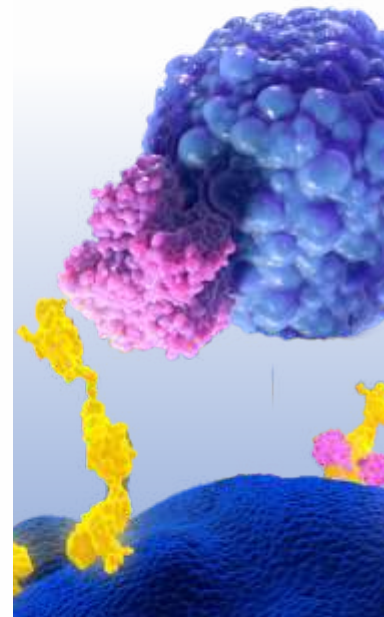
- ▶ Organelle and Cell Compartment Stains
- ▶ Cell Function Reagents and Kits
- ▶ Cell Painting Kits
- ▶ Multi Organelle Staining Kit
- ▶ Neuronal Differentiation Staining Kit
- ▶ Fluorescent Secondary Antibodies



In Vivo Imaging

IVIS range consists of comprehensive bioluminescent and fluorescent imaging agents that help better understand early disease-biological changes, track disease progression, help guide the drug discovery process, and evaluate efficacy and safety of drug candidates

- ▶ IVISense Fluorescent Probes
- ▶ IVISense Fluorescent Labels & Dyes
- ▶ IVISbrite Bioluminescent Substrates and Lentiviral Particles
- ▶ IVISbrite Bioluminescent Tumor Cell Lines
- ▶ IVISbrite Bioluminescent Bacterial Strains
- ▶ VesselVue Microbubble Contrast Agents



DELFIA TRF Assays

DELFIA provides a time-resolved fluorescence enzymatic assay compatible with multiple substrates or cells and is particularly well suited for discovery of specific, high-affinity monoclonal antibodies. Offers superior performance to conventional ELISAs

- Immunoassays
- Binding Assays
- Enzymatic Assays
- Non-radioactive Cytotoxicity and Cell Proliferation Assays

## LABORATORY POWER TOOLS

Breaking Down Complexities into Simpler Components



### Probe Homogenizers

**Omni Mixer | GLH 850 | Th<sub>q</sub> | Tissue Master**

- Powerful & versatile for a wide range of sample types & volumes
- Wide variety of accessories including generator probes
- Variable watt motor & speed range for consistent, powerful sample processing
- Whisper Drive Technology™ ensures ultra-quiet operation



### Ultrasonic Homogenizer

**Sonic Ruptor 400 | Sonic Ruptor 4000**

- Processing range: 0.25 mL - 1 L
- Powerful 400 / 4000 watt model for a wide range of samples



### Bead Mill Homogenizers

**Bead Ruptor Elite | Bead Ruptor 96  
Bead Ruptor 12 | Bead Ruptor 4**

- Fastest and broadest range of multi-sample processing
- High throughput processing-Dissociate up to 384 samples per cycle
- Near-linear motion for the highest processing efficiency
- Homogenize in 0.5 mL, 2 mL, 30 mL or 50 mL tubes



### Bead Ruptor Cryo Cooling Unit

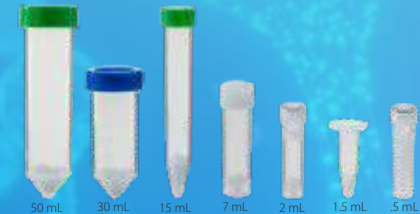
The BR Cryo Cooling Unit is compatible with the Bead Ruptor Elite and is designed to prevent the increase of sample temperature during the homogenization process

## CONSUMABLES & ACCESSORIES

- Patented Omni Tip™ plastic disposable generator probes
- Stainless Steel Homogenizer Probes



- Omni offers a selection of Beads & Tubes for ultimate versatility



Omni's variant tube sizes fit a range of sample volumes. With the Bead Ruptor's vigorous and uniform shaking, all samples are consistently homogenized.



## Microplates

Covering a vast array of application areas, our microplates are available in different well formats, plastic types, coatings, and colors. These microplates have been engineered to deliver the highest quality data for applications ranging from high throughput screening to cellular imaging

### Product Categories

- |                |                |                          |
|----------------|----------------|--------------------------|
| ▪ Luminescence | ▪ Cell Culture | ▪ Radiometric            |
| ▪ Fluorescence | ▪ Storage      | ▪ High-Content Screening |
| ▪ Absorbance   | ▪ TR-FRET      | ▪ Genomic Analysis       |
| ▪ Cell Imaging | ▪ HTRF         |                          |
| ▪ Microscopy   | ▪ Alpha        |                          |

### MYCOPLASMA PRODUCTS

Keep Mycoplasma Out and Cell Purity In

#### Bioluminescence Based Mycoplasma Detection & Prevention Systems

- MycoAlert™ PLUS Mycoplasma Detection Kit**  
 For accurate, reliable and universal mycoplasma detection
- MycoZap™ Mycoplasma Elimination Reagent**  
 For successful elimination of mycoplasma with low cell toxicity
- MycoZap™ Plus-CL and Plus-PR**  
 For protection against a broad range of microbial contaminants such as Gram(+) & Gram(-) bacteria, fungi as well as mycoplasma
- MycoZap™ Prophylactic**  
 For prevention of mycoplasma contamination in combination with your antibiotic formula of choice

#### Primary Cells

From normal patient donor

- Neural Cells
- Dermal Cells
- Pulmonary Cells
- Cardiac Cells
- Endothelial Cells
- Renal Cells
- Stem Cells
- Hematopoietic Cells
- Hepatocytes
- Hepatic Non-Parenchymal Cells

#### Bullet Kits & Supplements

Ideal startup kit for specialized cells

- Adipose -Derived Stem Cells BulletKit™ & SingleQuots™
- Neural Progenitor Differentiation Medium BulletKit™ & SingleQuots™
- Cardiac Fibroblast Growth Medium BulletKit™ & SingleQuots™
- Endothelial Cell Growth Medium BulletKit™ & SingleQuots™

#### BioWhittaker Specialty Media

Media that facilitate optimal production

- Therapeak™ MSC Growth Medium
- X-VIVO™ 10 Hematopoietic Media
- Pro293™ Chemically defined Media
- Insect-XPRESS™ Medium
- UltraDOMA-PF™ Hybridoma Media
- ProNSO™-1 Medium
- PowerCHO™-1 Medium

## Next Generation 4D-Nucleofector® Platform

Highly Efficient Transfection

**X Unit**  
Nucleofection® of various cell numbers in different formats

**Y Unit**  
Enabling adherent Nucleofection®

**96-well Unit**  
Higher throughput Nucleofection® in 96-well Nucleocuvette® Plate



#### FlashGel™ System

- FlashGel™ System contains all you need to quickly begin fast electrophoresis of DNA
- Screening with recovery directly without UV light band excision or purification



#### Electrophoresis Aid

- SeaKem LE Agarose - For Routine Analysis, Blotting
- SeaPlaque Agarose - For DNA & RNA Recovery, Cloning



- For measuring all sorts of glow Luminescence Assays
- Provides results for Mycoplasma Detection Assays Instantly
- Compact and Portable



“Large-scale transfection of up to  $1 \times 10^9$  cells in a single run using LV Unit”

## ■ PRIMARY ANTIBODIES

- Fusion Protein Tags
- Tumor Suppressors/ Apoptosis
- Cell Cycle Proteins
- Transcription Regulators
- Homeodomain Proteins
- Steroid Receptors
- Kinases and Phosphatases
- Growth Factors and Hormones
- Membrane Receptors
- Signaling Intermediates
- Transport and Trafficking
- Synthesis and Degradation
- GDP/GTP Binding Proteins
- Neurobiology
- Channel Proteins
- Lymphocyte Signaling
- Cell Adhesion Proteins
- Structural Proteins
- Additional Gene Products
- Veterinary Research Antibodies

## ■ CONTROL IgGs & IgG CONJUGATES

## ■ MONOCLONAL & RECOMBINANT SECONDARY ANTIBODIES

## ■ CONTROL MOUSE SERA

## Chemicals

- Prepared Buffers
- Buffer Components and Standard Lab Chemicals
- Stains, Dyes & Fluorescent Probes
- Solvents
- HRP and AP Substrates
- Protein Inhibitors/Activators
- Protein Substrates
- Stem Cell & Cell Culture Reagents
- Carbohydrates & Lipids
- Nucleotides, Peptides, Proteins & Amino Acids
- Crosslinkers
- Antimicrobials
- Prepared Buffers
- General Laboratory Reagents
- Stains, Dyes, Probes & Labels
- Chelators / Solvents

**ChemCruz®**  
Biochemicals

## SUPPORT PRODUCTS

- Immunocruz® Staining Systems
- Cruz Marker™ Mw Standards
- Protein A, G-plus & L Agarose Ip Reagents
- Chemiluminescence Luminol Reagent
- Prestained Mw Standards
- Blocking Reagents
- Purification Reagents

## GENE EDITING

- CRISPR Knockout & Activation Products
- CRISPR Support Products
- siRNA & shRNA Gene Silencers

## HRP Bundles

SCBT's HRP Bundle offers a combination of primary & its secondary antibodies at an economical prices

- ▲ Easy to use
- ▲ Cost Effective
- ▲ Multiple Application
- ▲ Self-Compatible

## NO MORE EXPERIMENTAL HURDLES WITH SCBT SUPPORT PRODUCTS

- Protein A/G PLUS-Agarose Beads
- Western Blotting Luminol Reagent
- UltraCruz® Protease Inhibitor Cocktail
- Cruz Marker™ Molecular Weight Standards
- Protein G PLUS-Agarose Reagent
- Broad Range Prestained Markers
- UltraCruz® Blocking Reagent
- PVDF Transfer membrane
- Blotto, non-fat dry milk
- RIPA Lysis Buffer



R&D Systems® ELISA Kits are the most trusted & most published ELISAs with 1000 target analytes spanning across 16 species. These ELISAs assure accurate performance attributed to high-quality manufacturing and performance standards

### Quantikine ELISA

- Complete ready to use kits
- Exhaustively tested for superior quality and reproducibility
- Detailed protocol booklets include inter-and intra-assay precision, recovery, linearity, sensitivity, and sample value data
- Colorimetric detection

### QuicKit ELISA

- The Quantikine QuicKit ELISAs provide quick, accurate quantitation of proteins
- Fast, simplified protocol that only takes 90 minutes to produce results with just one wash step.
- Extensively optimized to reduce matrix effects that are commonly seen with complex sample matrices

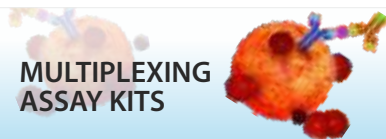
### HS Quantikine ELISA

- High Sensitive Quantikine ELISA Kits are complete assays generally used when very low levels of the target protein are expected.
- Detect femtogram levels of protein
- Complete ready-to-use kits

### DuoSet® ELISA

- DuoSet ELISA Development Systems contain the basic components required to develop a sandwich immunoassay for accurate measurements.
- Economical alternative to buying separate antibodies and protein standards.
- Contains carefully selected and validated antibodies, reducing development time

Human | Mouse | Rat | Porcine | Canine | Multi Species | Cynomolgus Monkey | Rhesus Macaque | Viral | Bovine | Guinea Pig | Rabbit | Equine



### MULTIPLEXING ASSAY KITS

Luminex multiplex assays utilize color-coded superparamagnetic beads coated with analyte-specific antibodies. Luminex assays have the largest, most flexible Luminex analyte menu available-ensuring every data point generated is meaningful to your research - optimizing the use of both of your sample & budget

### Luminex Discovery Assay

- Analyte flexibility with the largest, mix and match configurable panels.
- Faster time to results with premixed beads sets
- Performance validated & tested

### High Performance Assays

- Luminex High Performance are optimized panels with high sensitivity
- Pick and choose from an extensive menu of analytes
- Pre-mixed for optimal performance

### Custom Luminex Services

- Employ our assay experts and our extensive in-house collection of antibodies & proteins to build your specific custom multiplex panel
- Create multiplex assays for existing, or new, analytes
- Get analysis data ready for publication



### Recombinant & GMP Proteins

Manufactured under guidelines for cell therapy or further manufacturing processes, recombinant & GMP proteins display the highest levels of bioactivity & purity, low endotoxin levels, and lot-to-lot consistency.

- Cytokines and Growth Factors
- Animal-Free RUO Proteins
- Immune Checkpoint Proteins
- Avi-tag Biotinylated Proteins
- Fluorokines™ Fluorescent-labeled Recombinant Proteins
- Ubiquitin Related Products
- Fluorescent Glycan Labeling and Detection Reagents
- Enzymes



### Antibodies

R&D Systems offers a wide range of antibodies. Monoclonal and polyclonal primary antibodies are available conjugated to fluorescent or enzymatic labels or unconjugated.

- Recombinant Antibodies
- Conjugated Primary Antibodies
- Knockout Validated Antibodies
- Biosimilar Antibodies
- Anti-Idiotype Antibodies
- Epitope Tag Antibodies
- Secondary Antibodies
- Isotype Controls
- NorthernLights™ Fluorescent Secondary Antibodies



### Proteome Profiler Antibody Arrays

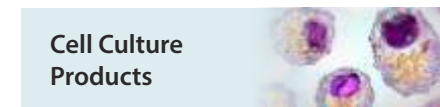
Proteome Profiler Antibody Arrays are simple and economical multiplex assays that allows semi-quantitative measurement of more than 100 proteins in a single sample.

#### Multiplex Extracellular Target Analytes

- Human, Mouse, and Rat Cytokine Antibody Array
- Human XL Oncology Antibody Array
- Human, Mouse, & Rat Adipokine Antibody Array
- Human and Mouse Angiogenesis Antibody Array

#### Multiplex Intracellular Target Analytes

- Human Cell Stress Antibody Array
- Human and Mouse Apoptosis Array
- Human Phospho-Immunoreceptor Antibody Array
- Human NFκB Pathway Antibody Array



### Cell Culture Products

High quality reagents including cell culture media, serum, defined media supplements, highly bioactive growth factors and small molecules, hydrogels, extracellular matrices, and basement membrane extracts for cell culture attachment.

- Pluripotent Stem Cell Media
- Mesenchymal Stem Cell Media
- Hematopoietic Lineage Media
- Cultrex Basement Membrane Matrix
- Purified Extracellular Matrix Proteins
- Recombinant Extracellular Matrix Proteins
- Balanced Salt Solutions
- Fetal Bovine Serum - Premium, US Origin
- Media Supplements & Antibiotics & Antimycotics



## Antibodies

Wide range of Polyclonal & Monoclonal Ab for use in various applications including Flow Cytometry, Western Blotting, ELISA, ICC & IHC. A secondary antibody specifically binds the species and immunoglobulin (Ig) class (isotype) of the primary antibody in an immunoassay

- Conjugated Antibodies
- Sample Size Antibodies
- KO Validated Antibodies
- Recombinant Antibodies
- Antibody Sampler Packs
- Antibody Pairs
- Secondary Antibodies
- Isotype Control Antibodies
- Monoclonal Polyclonal Antibodies
- Loading Control Antibodies
- Discover mFluor™ Violet Conjugated Antibodies

## Proteins & Peptides

Highly purified control peptides & bioactive proteins, native & purified recombinant proteins isolated from serum, cells, & tissue sources available in Animal-Free & Carrier-Free formats for in-vitro and in-vivo applications.

- Blocking Peptides
- Biologically Active Proteins
- ProDot Proteins
- Native Proteins
- Recombinant Proteins
- Carrier Free

## Activators & Inhibitors

Broad range of cellular Inhibitors and Activators that give insights into molecular mechanisms and function.

### Inhibitors :

- Caspase Inhibitors
- ERK Inhibitory Peptides
- AKT Pathway Inhibitors
- NOD-Like Receptor Inhibitors
- TLR Pathway Inhibitors

### Activators

- AGER Recombinant Protein Antigen
- PiColorLock™ Phosphate Detection Reagent
- pCLNRX Retrovirus Expression Vector

## Research Kits

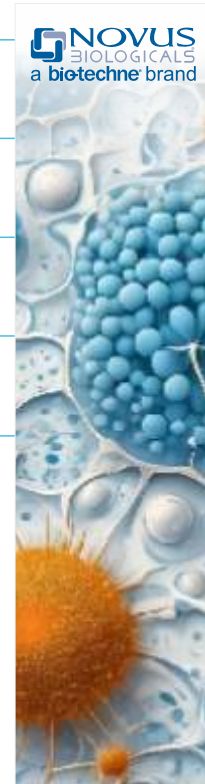
Variety of kits that include all of the materials required for particular experiment.

- Antibody Labeling Kits
- CHIP Kits
- Flow Cytometry Kits
- ChromataCHIP Kits
- ELISA Kits
- Imm-Link Immunogen Labeling Kits
- Antibody Purification Kits
- GTPase Assay Kits
- ATPase Assay Kits
- Epitope Tag Kits

## Support Products

Find an array of support reagents for your research assays.

- Exosome Isolation
- Flow Cytometry Beads
- IHC Tissue Slides
- IHC Microarrays
- Western Blot Gels & Buffers
- Western Blot Membranes
- DAPI Solution



## Pharmacology

- GPCRs / 7-TM Receptors
- Enzyme-Linked Receptors
- Enzymes on Channels
- Nuclear Receptors
- Transporters
- Other Pharmacology

## Cell Biology

- Angiogenesis
- Cell Cycle
- Cell Metabolism
- Cytoskeleton & Motor Proteins
- ECM & Adhesion Molecules
- Epigenetics
- Regulated Cell Death
- Signal Transduction
- Stem Cells

## Product type

- Small Molecules
- Peptides / Chemogenetics
- Controlled Substances
- Compound Libraries
- Fluorescence Imaging
- GMP & Ancillary Material Grade Small Molecules
- Optopharmacology
- PROTACs & Targeted Protein
- Reagents Stapled Peptides Toxins

## Research Area

- Cancer
- Cardiovascular System
- Cell and Gene Therapy
- COVID-19 Research
- Endocrinology
- Immunology
- Infectious Disease
- Neuroscience
- Pain & Inflammation
- Respiratory System

The Tocris catalog consists of a unique collection of research tools for life science research, from industry standards to the latest and most innovative chemical tool compounds. These products assure the highest quality & purity.

## xMAP® Technology

The Most Trusted Multiplexing Technology

A Flexible Open Architecture Design Making Your Life Science & Clinical Research Easier!



### MAGPIX®

Simple, Affordable & Compact Solution for Multianalyte Screening

- **Multiplex Capacity:** 50 analytes per well
- **Compatible Microspheres:** MagPlex®, MagPlex-TAG™, and MagPlex®-Avidin
- **Technology:** Beads imaged by a camera under fluorescence
- **Read Time:** 96-well plate in <60 min (up to 4,800 tests/hour)
- **Dynamic Range:** ≥3.5 logs



### LUMINEX® 200

Versatile, Efficient and Widely Used in Multiplex Profiling

- **Multiplex Capacity:** 100 analytes per well
- **Compatible Microspheres:** All xMAP® Microspheres
- **Technology:** Flow-based with lasers
- **Read Time:** 96-well plate in ~45 min (up to 12,800 tests/hour)
- **Dynamic Range:** ≥3.5 logs



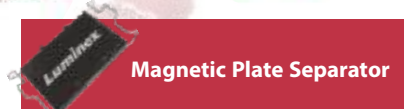
### FLEXMAP® 3D

High Throughput, High Speed up to 500 Simultaneous Assays for Breakthrough Prognosis

- **Multiplex Capacity:** 100 analytes per well
- **Compatible Microspheres:** All xMAP® Microspheres
- **Technology:** Flow-based with lasers
- **Read Time:** 96-well plate in ~45 min (up to 12,800 tests/hour)
- **Dynamic Range:** ≥3.5 logs

xTAG® Nucleic Acid Assay Technology Combined with Luminex Instruments

## Accessories & Reagents



### Magnetic Plate Separator

- Designed to be used with the Manual Washing Procedure for MagPlex Microspheres
- ~ 90% less expensive than a typical automated plate washer



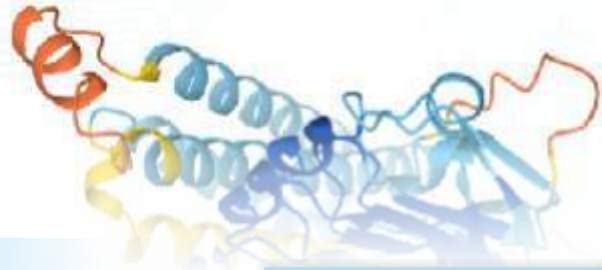
### Magnetic Tube Separator

- The Luminex 1.5 mL Magnetic Tube Separator is intended for a single reaction tube.
- Ideal for small scale coupling reactions



### xMAP® Antibody Coupling (AbC) Kit

- The xMAP® Antibody Coupling Kit, or "AbC" kit, is a reagent kit that contains everything you need to couple an antibody to MagPlex® Microspheres.
- Equipped with pre-optimized reagents & buffers



## Assay Kits



- GranzymesA
- ADAMs and ADAMTS
- Amyloid degrading proteases
- Amyloid modifying enzymes
- Caspases / Cathepsins / MMPs
- Phosphatases / Sortase
- HIV/HCV/WNV/TEV
- Kallikrein, Thrombin, Plasmin

## iD Sensolyte® Assay Kits

Fluorescence or Förster resonance energy transfer (FRET) Technology: Ultra-Sensitive, Long Wavelength



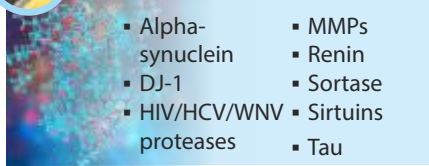
## Dyes & Detection Reagents



- Labeling Dyes
- Detection Reagents
- Indicators & Standards
- Custom Services



## Recombinant Proteins & Enzymes



- Alpha-synuclein
- DJ-1
- HIV/HCV/WNV proteases
- MMPs
- Renin
- Sortase
- Sirtuins
- Tau



Antibody



Consumables



Molecular Biology



Arrays



Enzymes



Proteins & Peptides



Assays & Elisa Kits



Isotype Controls



Media & Cell Culture



Small Molecules



Microbiology



Primary Cells



Chemical



Cell Lines



Cloning

### Neuronal Cell Lines

- Mouse and Rat Hypothalamus
- Mouse Hippocampus
- Mouse Pituitary
- Mouse Motor Neuron-Like
- Human Oligodendrocyte
- Human Cerebral Microvascular Endothelium

### Non-Neuronal Cell Lines

- Human Cerebral Microvascular Endothelium
- Mouse Cardiac Endothelium
- Human Smooth Muscle
- Bovine Trabecular Meshwork
- Human Ovarian Cancer

## FLAER Alexa Fluor® 488 labeled variant of Aerolysin

A unique protein that binds tightly & specifically to mammalian GPI anchors.

## CUSTOM PEPTIDE

- ❖ Heavy isotope-labeled
- ❖ Fluorescent Labeled
- ❖ FRET
- ❖ TR-FRET
- ❖ Cyclic
- ❖ Disulfide-Bridged
- ❖ Phosphorylated
- ❖ Lipopeptides
- ❖ Glycosylated and Glycated
- ❖ Peptide-Oligo Conjugates

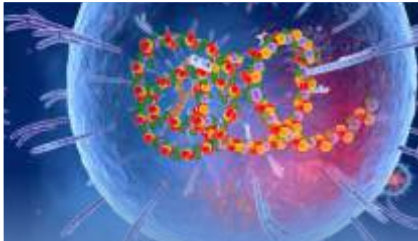
## AMINO ACIDS AND SYNTHESIS REAGENTS

### Standard Amino Acids (D & L)

- ❖ Alanine (Ala)
- ❖ Cysteine (Cys)
- ❖ Unusual Amino Acids
- ❖ Ala, Gly, Val, & Leu Analogs
- ❖ Phe & Tyr Analogs

### Isotope Labeled Amino Acids

- ❖ Alanine
- ❖ Arginine
- ❖ Aspartic Acid
- ❖ Tyrosine



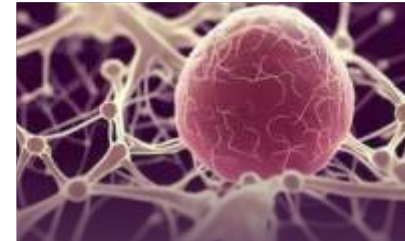
### Vector & Virus Library

- Adeno-Associated Virus (AAV)
- Adenovirus
- Lentivirus / Retrovirus System
- siRNA Lentivirus
- siRNA AAV
- 3'UTR Reporter Vector/Virus/Cell Lines
- 5'UTR Reporter Vector
- Promoter Reporter Vector
- ORF / Protein Vector
- Viral Expression System
- CRISPR/Cas9
- lncRNA & Antisense RNA
- miRNA Vector/Virus



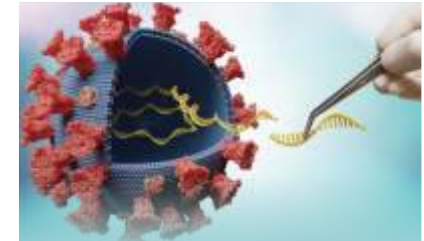
### DNA & RNA Applications

- NGS & Molecular Biology Enzymes & Kits
- Restriction Enzymes
- Cloning Kits
- Site-Directed Mutagenesis Kit
- RNA & DNA Purification Kits
- DNA Markers
- PCR / RT-PCR / qPCR
- SafeView™ DNA Stains
- Supplementary Products
- siRNA / miRNA



### Cell Lines

- Tumor Cells
- Primary Cells & Cell Lines
- Immortalized Primary Cells
- GFP & RFP Expressing Cell lines
- Reporter Cell Lines
- Drug Discovery Cell Lines
- Stem Cells



### CRISPR

- Genome-wide Knockout Cell Lines
- Genome-wide sgRNA Libraries
- sgRNA Activation Libraries
- Cas9 Expressing Stable Cell Lines
- Cas9 Vectors and Viruses
- sgRNA Vector and Virus Controls
- Custom sgRNA Vectors and Viruses



## Life Science Essentials

- |                        |                                   |                             |
|------------------------|-----------------------------------|-----------------------------|
| ▪ DNA Cloning          | ▪ In Vitro Transcription          | ▪ HumanGPCR ORF Clones      |
| ▪ Bacterial Expression | ▪ Molecular Diagnosis             | ▪ Cell based Assays         |
| ▪ Cell Transfection    | ▪ Antibiotics                     | ▪ End-Point PCR             |
| ▪ qPCR                 | ▪ Buffers & Reagents              | ▪ DNA Electrophoresis       |
| ▪ PCR Detection Kits   | ▪ Animal Serum, Plasma & Albumins | ▪ Nucleotides               |
| ▪ DNA Ladders          | ▪ Nucleotides                     | ▪ DNA & RNA Extraction Kits |
| ▪ Dual Reporters       |                                   |                             |

## In Vitro Transcription Enzymes

Customizable and Consistent solutions to advance your challenges from Lab to Commercial RNA synthesis

## Clinical Grade

Your perfect partner to Accelerate your pathway from Research to Clinical scale

### DNA & RNA

DNA Extraction Kits | Electrophoresis | Markers | PCR | Transfection | Total RNA | miRNA

### MaxPab® Ab

Angiogenesis | Apoptosis | Binding | CD Markers | Cell Ad/Junc/Cytoskel | Enzyme | Membrane

### DNAPab™

Cell Cycle | Cytokine | Enzyme | GPCR | Metabolism | Neurobiology | Plasma/Serum | Stem Cell

Human | Mouse | Rat | Rabbit | Hamster | Pig | Bovine | for Multiple Markers

### ELISAs

Recombinant Ab | Conjugate Ab | Secondary/Tag Ab | IHC/Pathology Ab | PAb & MAb

### Antibodies

Bioactive | Native | Inhibitors | Substrates | CRISPR | CD Markers | Proteoliposomes

### Proteins/Peptides

Chromosome (CEN) CISH & FISH Probes | Control CISH Probes | Gene CISH Probes

### In Situ Hybridization

### SARS-CoV/CoV-2

Proteins/Peptides | Polyclonal & Monoclonal Ab | Neutralizing Ab | Pseudovirus

### Beads/Dyes

Fluorescent Dyes | Magnetic Beads | Labeled Beads

### GMP/ASR/IVD

GMP Reagents

### Assay Kits

Assay Kits provide the reagents required to perform analytical tests for the measurement of specific analytes

- Dietary Fiber/Starch
- Mono/Disaccharides
- Polysaccharides
- Alcohols
- Organic Acids
- Sulfite/Nitrogen
- Enzyme Activity
- Reagent Mixtures
- Enzymes
- Carbohydrates
- Chemicals/Equipment
- Antibodies

### Enzymes

Enzymes are proteins that catalyse biochemical reactions and exist within all living organisms. Responsible for regulation of biological functions such as signal transduction and metabolism

- Analytical Enzymes
- Carbohydrate Active enZymes
- Glycobiology Enzymes
- ANKOM Dietary Fiber Enzymes

### Carbohydrates

- Oligosaccharides
- Polysaccharides

### Enzyme Substrates

Dye labelled polysaccharides are very useful chromogenic substrates for the measurement of endo-glycosyl hydrolase activity.

- Enzyme Activity Assay Kits
- Enzyme Tablet Tests
- Soluble Chromogenic Substrates
- Insoluble Chromogenic Substrates
- Colourimetric Oligosaccharides

### Chemicals & Equipment

Megazyme's chromogenic substrates provide the most convenient methods for the assay of hydrolytic enzymes but as the native substrates, polysaccharides and oligosaccharides.

- Analyzers
- Waterbaths
- Analytical Standards
- Buffers
- Celite/Resins/Chemicals
- Cofactors & Stains



## Our Valued Partners



COMPETITIVE PRICING

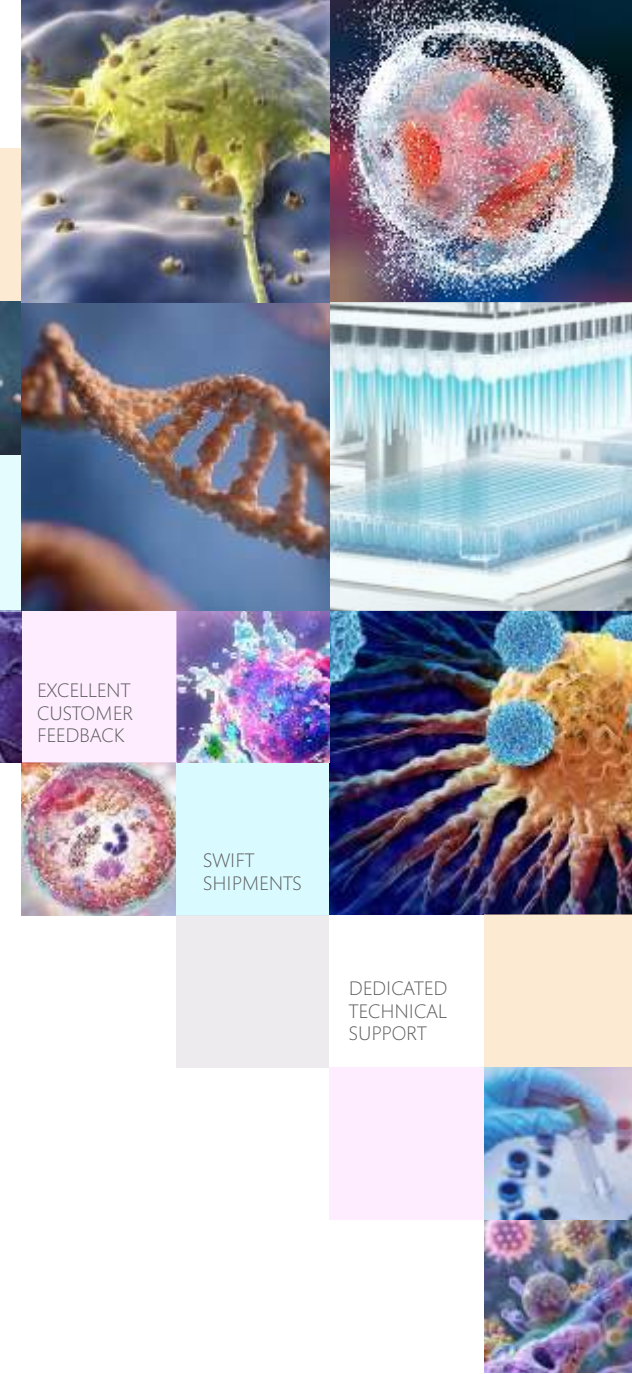
PREMIUM QUALITY

VAST CATALOGUE

EXCELLENT CUSTOMER FEEDBACK

SWIFT SHIPMENTS

DEDICATED TECHNICAL SUPPORT



# Biotech India

### South Region:

No. 71, IIInd Floor, PID No. 21-126-71, West of Chord Road  
IV Stage, III Block, Basaveshwara Nagar, Bengaluru - 560079  
Tel: +91-80-41278371 | CustServ@BiotechIndia.com

### Corporate Office:

328 Ansal Chamber II, 6 Bhikaji Cama Place, New Delhi - 110066  
Tel: +91-11-2610-1271, 011-4984-6500 | Info@BiotechIndia.com  
[www.BiotechIndia.com](http://www.BiotechIndia.com)